

0533-018

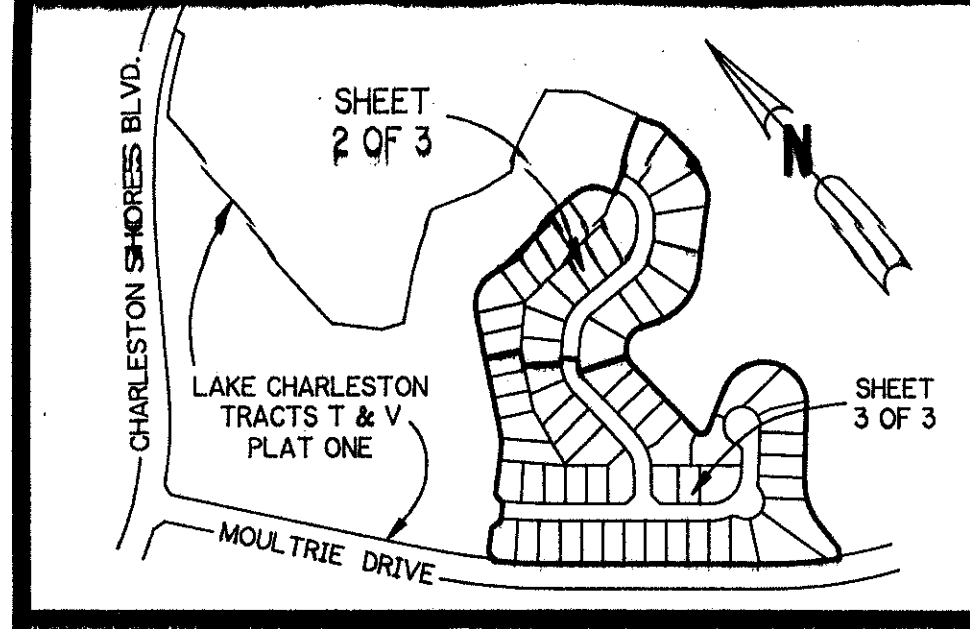
187

A PART OF LAKE CHARLESTON PLANNED UNIT DEVELOPMENT

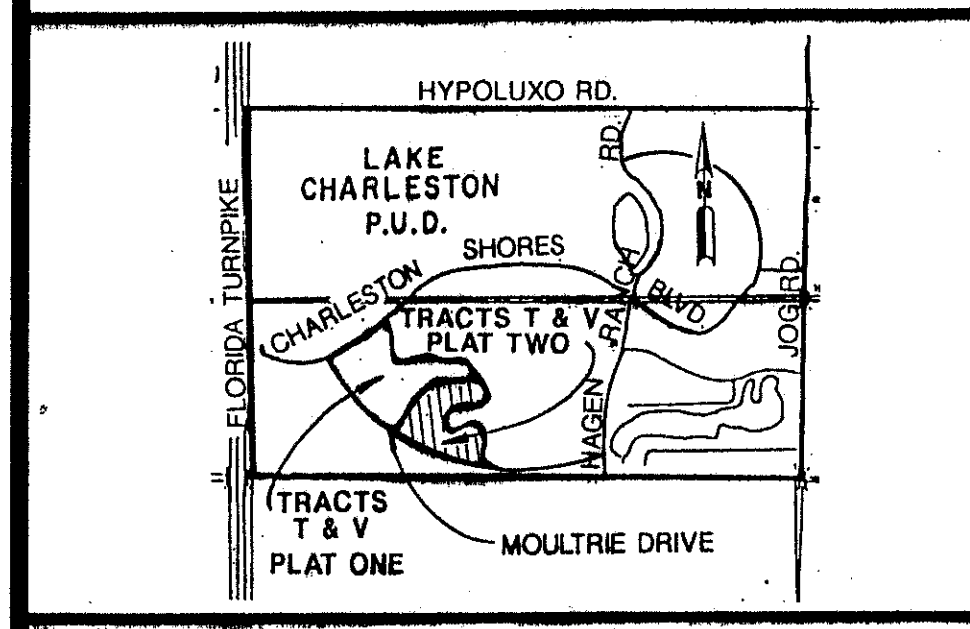
LAKE CHARLESTON - TRACTS T & V - PLAT TWO

BEING A REPLAT OF A PORTION OF TRACTS T AND V OF LAKE CHARLESTON PLAT NO.3 AS RECORDED
IN PLAT BOOK 62, PAGES 55-68, PUBLIC RECORDS OF PALM BEACH COUNTY, FLORIDA
SECTION 9, TOWNSHIP 45 SOUTH, RANGE 42 EAST
PALM BEACH COUNTY, FLORIDA

COUNTY OF PALM BEACH)
STATE OF FLORIDA) SS
This Plat was filed for record at 11:29 A.M.
this 21 day of December 19 93
and duly recorded in Plat Book No. 74
on page 487 TRACT 487
DOROTHY H. WILKEN, Clerk of Circuit Court
by [Signature] D.C.



KEY MAP
N.T.S.



LOCATION MAP
N.T.S.

SHEET 1 OF 3 OCTOBER, 1993

SAID LANDS SITUATE, LYING AND BEING IN PALM BEACH COUNTY, FLORIDA,
CONTAINING 17.11 ACRES MORE OR LESS.
HAS CAUSED THE SAME TO BE SURVEYED AND PLATTED AS SHOWN HEREON,
AND DOES HEREBY DEDICATE AS FOLLOWS:

- TRACT "A" - TRACT "A", AS SHOWN HEREON, IS HEREBY DEDICATED TO THE BOARD OF COUNTY COMMISSIONERS OF PALM BEACH COUNTY, FLORIDA, FOR THE PERPETUAL USE OF THE PUBLIC FOR PUBLIC STREET PURPOSES.
- DRAINAGE EASEMENTS - THE DRAINAGE EASEMENTS AS SHOWN HEREON ARE HEREBY DEDICATED IN PERPETUITY FOR DRAINAGE PURPOSES. THE MAINTENANCE OF ALL DRAINAGE FACILITIES LOCATED THEREIN SHALL BE THE PERPETUAL MAINTENANCE OBLIGATION OF THE LAKE CHARLESTON MAINTENANCE ASSOCIATION, INC., ITS SUCCESSORS AND ASSIGNS, WITHOUT RECOURSE TO PALM BEACH COUNTY.

PALM BEACH COUNTY SHALL HAVE THE RIGHT, BUT NOT THE OBLIGATION, TO MAINTAIN ANY PORTION OF THE DRAINAGE SYSTEM ENCOMPASSED BY THIS PLAT WHICH IS ASSOCIATED WITH THE DRAINAGE OF PUBLIC STREETS, INCLUDING THE RIGHT TO UTILIZE FOR PROPER PURPOSES ANY AND ALL DRAINAGE, LAKE MAINTENANCE, AND LAKE MAINTENANCE ACCESS EASEMENTS ASSOCIATED WITH SAID DRAINAGE SYSTEM.

- UTILITY EASEMENTS - THE UTILITY EASEMENTS AS SHOWN HEREON ARE HEREBY DEDICATED IN PERPETUITY FOR THE CONSTRUCTION AND MAINTENANCE OF UTILITY FACILITIES, INCLUDING CABLE TELEVISION SYSTEMS. THE INSTALLATION OF CABLE TELEVISION SYSTEMS SHALL NOT INTERFERE WITH THE CONSTRUCTION AND MAINTENANCE OF OTHER UTILITIES.
- OPEN SPACE TRACTS - TRACT OS-1, AS SHOWN HEREON, IS HEREBY RESERVED FOR THE LAKE CHARLESTON MAINTENANCE ASSOCIATION, INC., ITS SUCCESSORS AND ASSIGNS, FOR OPEN SPACE PURPOSES AND IS THE PERPETUAL MAINTENANCE OBLIGATION OF SAID ASSOCIATION, ITS SUCCESSORS AND ASSIGNS, WITHOUT RECOURSE TO PALM BEACH COUNTY.
- BUFFER EASEMENTS - BUFFER EASEMENTS, AS SHOWN HEREON, ARE HEREBY RESERVED FOR THE LAKE CHARLESTON MAINTENANCE ASSOCIATION, INC., ITS SUCCESSORS AND ASSIGNS, FOR BUFFER PURPOSES AND IS THE PERPETUAL MAINTENANCE OBLIGATION OF SAID ASSOCIATION, ITS SUCCESSORS AND ASSIGNS, WITHOUT RECOURSE TO PALM BEACH COUNTY.

IN WITNESS WHEREOF, BIRCH STREET BUILDERS, INC., A CALIFORNIA CORPORATION AUTHORIZED TO TRANSACT BUSINESS IN THE STATE OF FLORIDA, AS GENERAL PARTNER OF R-L PARTNERS, A FLORIDA GENERAL PARTNERSHIP HAS CAUSED THESE PRESENTS TO BE SIGNED BY ITS PRESIDENT AND ATTESTED TO BY ITS ASSISTANT SECRETARY AND ITS CORPORATE SEAL TO BE AFFIXED HERETO BY AND WITH THE AUTHORITY OF ITS BOARD OF DIRECTORS, THIS 18 DAY OF October, A.D. 1993.

R-L PARTNERS, A FLORIDA GENERAL PARTNERSHIP
BY: BIRCH STREET BUILDERS, INC., A CALIFORNIA CORPORATION, A CORPORATE GENERAL PARTNER
ATTEST: [Signature] SHIRLEY O'CONNOR ASSISTANT SECRETARY
BY: [Signature] DOUGLAS F. BAUER PRESIDENT
ITS: ASSISTANT SECRETARY ITS: PRESIDENT

ACKNOWLEDGEMENT:
STATE OF CALIFORNIA)
SS)
COUNTY OF ORANGE)
ON October 18, 1993 BEFORE ME Teresa O'Connor
PERSONALLY APPEARED Douglas F. Bauer and Shirley O'Connor
PROVED TO ME ON THE BASIS OF SATISFACTORY EVIDENCE TO BE THE PERSONS WHOSE NAMES ARE SUBSCRIBED TO THE WRITTEN INSTRUMENT AND ACKNOWLEDGE TO ME THAT THEY EXECUTED THE SAME IN THEIR AUTHORIZED CAPACITIES, AND THAT BY THEIR SIGNATURES ON THE INSTRUMENT THE PERSONS OR THE ENTITY UPON BEHALF OF WHICH THE PERSONS ACTED, EXECUTED THE INSTRUMENT.

WITNESS MY HAND AND OFFICIAL SEAL.
[Signature] Commission # 997346 exp. 7/2/97
SIGNATURE

TITLE CERTIFICATION

STATE OF FLORIDA)
SS)
COUNTY OF PALM BEACH)

WE, BOOSE, CASEY, CIKLIN, LUBITZ, MARTENS, MCBANE AND O'CONNELL, A PARTNERSHIP INCLUDING PROFESSIONAL ASSOCIATIONS IN THE STATE OF FLORIDA DO HEREBY CERTIFY THAT WE HAVE EXAMINED THE TITLE TO THE HEREON DESCRIBED PROPERTY; THAT WE FIND THE TITLE TO THE PROPERTY IS VESTED TO R-L PARTNERS, A FLORIDA GENERAL PARTNERSHIP; THAT THE CURRENT TAXES HAVE BEEN PAID; AND THAT WE FIND THAT THE PROPERTY IS ENCUMBERED BY THE MORTGAGES SHOWN HEREON; AND WE FIND THAT ALL MORTGAGES ARE SHOWN AND ARE TRUE AND CORRECT, AND THAT THERE ARE NO OTHER ENCUMBRANCES OF RECORD.

BOOSE, CASEY, CIKLIN, LUBITZ, MARTENS, MCBANE AND O'CONNELL
[Signature]
ROBERT L. CRANE
ATTORNEY AT LAW
DATE: October 21, 1993

MORTGAGEE'S CONSENT

STATE OF ILLINOIS)
SS)
COUNTY OF COOK)

THE UNDERSIGNED HEREBY CERTIFIES THAT IT IS THE HOLDER OF A MORTGAGE UPON THE PROPERTY DESCRIBED HEREON AND DOES HEREBY JOIN IN AND CONSENT TO THE DEDICATION OF THE LAND DESCRIBED IN SAID DEDICATION BY THE OWNER THEREOF AND AGREES THAT ITS MORTGAGE WHICH IS RECORDED IN OFFICIAL RECORDS BOOK 6537 AT PAGES 1155 THROUGH 1171 OF THE PUBLIC RECORDS OF PALM BEACH COUNTY, FLORIDA, SHALL BE SUBORDINATED TO THE DEDICATION SHOWN HEREON.

IN WITNESS WHEREOF, CONTINENTAL BANK, N.A., A NATIONAL BANKING ASSOCIATION, HAS CAUSED THESE PRESENTS TO BE SIGNED BY ITS [Signature] AND ATTESTED TO BY ITS [Signature] AND ITS CORPORATE SEAL TO BE AFFIXED HERETO BY AND WITH THE AUTHORITY OF ITS BOARD OF DIRECTORS THIS 20 DAY OF October, 1993.

CONTINENTAL BANK, N.A., A NATIONAL BANKING ASSOCIATION
ATTEST: [Signature] AND [Signature]
AND [Signature] SKORONSKI BY: [Signature] JEAN BARBATO
ITS: [Signature] Vice President ITS: [Signature] vice President

ACKNOWLEDGEMENT:

STATE OF ILLINOIS)
SS)
COUNTY OF COOK)

BEFORE ME, PERSONALLY APPEARED [Signature] AND [Signature] AND [Signature] TO ME WELL KNOWN, AND KNOWN TO ME TO BE THE INDIVIDUALS DESCRIBED IN AND WHO EXECUTED THE FOREGOING INSTRUMENT AS [Signature] AND [Signature] OF CONTINENTAL BANK, N.A., A NATIONAL BANKING ASSOCIATION, AND SEVERALLY ACKNOWLEDGED TO AND BEFORE ME THAT THEY EXECUTED SUCH INSTRUMENT AS SUCH OFFICERS OF SAID CORPORATION, AND THAT THE SEAL AFFIXED TO THE FOREGOING INSTRUMENT IS THE CORPORATE SEAL OF SAID CORPORATION AND THAT IT WAS AFFIXED TO SAID INSTRUMENT BY DUE AND REGULAR CORPORATE AUTHORITY AND THAT SAID INSTRUMENT IS THE FREE ACT AND DEED OF SAID CORPORATION.

WITNESS MY HAND AND OFFICIAL SEAL THIS 20 DAY OF October, 1993.
[Signature] NOTARY PUBLIC - STATE OF ILLINOIS
MY COMMISSION EXPIRES 5-21-94

SURVEYOR'S CERTIFICATE:

STATE OF FLORIDA)
SS)
COUNTY OF PALM BEACH)

THIS IS TO CERTIFY THAT THE PLAT SHOWN HEREON IS A TRUE AND CORRECT REPRESENTATION OF A SURVEY MADE UNDER MY RESPONSIBLE DIRECTION AND SUPERVISION; THAT SAID SURVEY IS ACCURATE TO THE BEST OF MY KNOWLEDGE AND BELIEF; THAT PERMANENT REFERENCE MONUMENTS ("P.R.M.S.") HAVE BEEN PLACED AS REQUIRED BY LAW AND THAT PERMANENT CONTROL POINTS ("P.C.P.S.") WILL BE SET UNDER THE GUARANTEES POSTED WITH THE PALM BEACH COUNTY BOARD OF COUNTY COMMISSIONERS FOR THE REQUIRED IMPROVEMENTS; AND, FURTHER, THAT THE SURVEY DATA COMPLIES WITH ALL THE REQUIREMENTS OF PALM BEACH COUNTY, FLORIDA, AS AMENDED, AND THE ORDINANCES OF PALM BEACH COUNTY, FLORIDA.

DATE: 11-2-93
[Signature]
PERRY C. WHITE
PROFESSIONAL LAND SURVEYOR NO. 4213
STATE OF FLORIDA

BOARD OF COUNTY COMMISSIONERS PALM BEACH COUNTY, FLORIDA

THIS PLAT IS HEREBY APPROVED FOR RECORD THIS 21 DAY OF Dec, 1993.

BY: [Signature]
MARY MCCARTY
CHAIR OF THE COUNTY COMMISSION

ATTEST: DOROTHY H. WILKEN, CLERK

BY: [Signature]
DEPUTY CLERK

COUNTY ENGINEER

THIS PLAT IS HEREBY APPROVED FOR RECORD THIS 21 DAY OF Dec, 1993.

BY: [Signature]
GEORGE T. WEBB, P.E.
COUNTY ENGINEER

SURVEYOR'S NOTES:

- THE BEARINGS SHOWN HEREON ARE BASED ON A BEARING OF NORTH 45°22'34" WEST ALONG THE SOUTHERLY BOUNDARY OF THE PLAT OF LAKE CHARLESTON PARCELS "T" AND "V".
- THERE SHALL BE NO BUILDINGS OR ANY KIND OF CONSTRUCTION PLACED ON UTILITY OR DRAINAGE EASEMENTS. CONSTRUCTION OR LANDSCAPING UPON LAKE MAINTENANCE OR LAKE MAINTENANCE ACCESS EASEMENTS MUST BE IN CONFORMANCE WITH ORDINANCE 86-21 AND ALL OTHER BUILDING AND ZONING CODES AND/OR ORDINANCES OF PALM BEACH COUNTY.
- THERE SHALL BE NO TREES OR SHRUBS PLACED ON UTILITY EASEMENTS WHICH ARE PROVIDED FOR WATER AND SEWER USE OR UPON DRAINAGE OR ACCESS EASEMENTS.
- LANDSCAPING ON OTHER UTILITY EASEMENTS SHALL BE ALLOWED ONLY AFTER CONSENT OF ALL UTILITY COMPANIES OCCUPYING SAME.
- ALL LINES INTERSECTING CIRCULAR CURVES ARE RADIAL UNLESS OTHERWISE NOTED:
(N.R.) = NON-RADIAL
(R.F.) = RADIAL TO FRONT LOT LINE
(R.R.) = RADIAL TO REAR LOT LINE
- THERE MAY BE ADDITIONAL RESTRICTIONS THAT ARE NOT RECORDED ON THIS PLAT THAT MAY BE FOUND IN THE PUBLIC RECORDS OF PALM BEACH COUNTY.
- IN INSTANCES WHERE DRAINAGE AND UTILITY EASEMENTS INTERSECT, THE AREA WITHIN THE INTERSECTION ARE DRAINAGE AND UTILITY EASEMENTS. CONSTRUCTION AND MAINTENANCE OF UTILITY FACILITIES SHALL NOT INTERFERE WITH THE DRAINAGE FACILITIES WITHIN THE AREAS OF INTERSECTION.
- THERE SHALL BE NO ABOVE GROUND APPURTENANCES WITHIN THE 20' LAKE MAINTENANCE OR LAKE MAINTENANCE ACCESS EASEMENT WITHOUT THE CONSENT OF PALM BEACH COUNTY.
- THE LAKE MAINTENANCE EASEMENTS, AS SHOWN HEREON, HAVE BEEN DEDICATED TO THE LAKE CHARLESTON MAINTENANCE ASSOCIATION, INC., A FLORIDA CORPORATION NOT-FOR-PROFIT, FOR ACCESS TO AND MAINTENANCE OF THE LAKE TRACTS, THE LANDS THEREIN AND THEREUNDER BEING THE PERPETUAL MAINTENANCE RESPONSIBILITY OF SAID ASSOCIATION, ITS SUCCESSORS AND ASSIGNS, WITHOUT RECOURSE TO PALM BEACH COUNTY, PER LAKE CHARLESTON PLAT NO.3 (PLAT BOOK 62, PAGES 55 THROUGH 68).
- THE FLOODPLAIN EASEMENTS, AS SHOWN HEREON, HAVE BEEN DEDICATED TO THE LAKE CHARLESTON MAINTENANCE ASSOCIATION, INC., A FLORIDA CORPORATION NOT-FOR-PROFIT, FOR THE TEMPORARY STORAGE OF EXCESS WATER IN TIMES OF HEAVY RAINFALL, THE LANDS THEREIN AND THEREUNDER BEING THE PERPETUAL MAINTENANCE RESPONSIBILITY OF SAID ASSOCIATION, ITS SUCCESSORS AND ASSIGNS, WITHOUT RECOURSE TO PALM BEACH COUNTY, PER LAKE CHARLESTON PLAT NO.3 (PLAT BOOK 62, PAGES 55 THROUGH 68).
- THE PLAT OF LAKE CHARLESTON PARCEL "T" AND "V", A PART OF LAKE CHARLESTON P.U.D. AS RECORDED IN PLAT BOOK 66, PAGES 86-89 IN THE PUBLIC RECORDS OF PALM BEACH COUNTY, FLORIDA HAS BEEN VACATED BY RESOLUTION NO. R-92-562 AS RECORDED IN OFFICIAL RECORD BOOK 7227 PAGE 847 DATED MAY 4, 1992.

SITE PLAN DATA

ZONING PETITION NO.	
TOTAL AREA	17.11 ACRES
DENSITY	4 LOTS PER ACRE
NUMBER OF LOTS	69
OPEN SPACE TRACTS	0.03 ACRES
TRACT A	2.27 ACRES

THIS INSTRUMENT PREPARED BY
PERRY C. WHITE, P.L.S. 4213 STATE OF FLORIDA
LAWSON, NOBLE AND ASSOCIATES, INC.
ENGINEERS PLANNERS AND SURVEYORS
STATE OF FLORIDA

DEDICATION:

KNOW ALL MEN THESE PRESENTS, THAT R-L PARTNERS, A FLORIDA GENERAL PARTNERSHIP, OWNERS OF THE LAND SHOWN HEREON AS LAKE CHARLESTON - TRACTS "T" & "V" - PLAT TWO, BEING A REPLAT OF A PORTION OF TRACTS "T" AND "V" OF LAKE CHARLESTON PLAT NO.3 AS RECORDED IN PLAT BOOK 62, PAGES 55 THROUGH 68 INCLUSIVE, OF THE PUBLIC RECORDS OF PALM BEACH COUNTY, FLORIDA AND BEING MORE PARTICULARLY DESCRIBED AS FOLLOWS:

BEGIN AT THE MOST SOUTHERLY CORNER OF SAID PLAT OF LAKE CHARLESTON PARCEL "T" AND "V" LYING ON THE EASTERLY RIGHT-OF-WAY LINE OF MOULTRIE DRIVE, SAID POINT BEING A POINT ON A CIRCULAR CURVE CONCAVE TO THE NORTHEAST WHOSE RADIUS POINT BEARS NORTH 35°01'25" EAST FROM SAID POINT, HAVING A RADIUS OF 1260.00 FEET AND A CENTRAL ANGLE OF 09°36'01"; THENCE NORTHWESTERLY ALONG THE ARC OF SAID CURVE, AN ARC DISTANCE OF 211.12 FEET; THENCE NORTH 45°22'34" WEST, A DISTANCE OF 610.65 FEET TO A POINT OF CURVATURE OF A CIRCULAR CURVE CONCAVE TO THE NORTHEAST, HAVING A RADIUS OF 1960.00 FEET AND A CENTRAL ANGLE OF 05°25'38"; THENCE NORTHWESTERLY ALONG THE ARC OF SAID CURVE, AN ARC DISTANCE OF 185.65 FEET TO A POINT WHOSE RADIUS POINT BEARS NORTH 50°03'04" EAST FROM SAID POINT (THE LAST THREE DESCRIBED COURSES BEING COINCIDENT WITH THE WESTERLY BOUNDARY OF SAID PLAT OF LAKE CHARLESTON PARCEL "T" AND "V"); THENCE NORTH 06°02'07" EAST, A DISTANCE OF 35.96 FEET; THENCE NORTH 52°01'10" EAST, A DISTANCE OF 70.04 FEET; THENCE SOUTH 84°00'06" EAST, A DISTANCE OF 34.72 FEET; THENCE NORTH 54°06'50" EAST, A DISTANCE OF 50.13 FEET; THENCE NORTH 05°56'25" EAST, A DISTANCE OF 36.01 FEET; THENCE NORTH 52°01'10" EAST, A DISTANCE OF 130.48 FEET TO A POINT OF CURVATURE OF A CIRCULAR CURVE CONCAVE TO THE NORTHWEST, HAVING A RADIUS OF 140.00 FEET AND A CENTRAL ANGLE OF 19°07'12"; THENCE NORTHEASTERLY ALONG THE ARC OF SAID CURVE, AN ARC DISTANCE OF 46.72 FEET; THENCE NORTH 32°53'58" EAST, A DISTANCE OF 354.86 FEET, TO A POINT OF CURVATURE OF A CIRCULAR CURVE CONCAVE TO THE SOUTH, HAVING A RADIUS OF 90.00 FEET AND A CENTRAL ANGLE OF 71° 12'50"; THENCE NORTHEASTERLY, EASTERLY AND SOUTHEASTERLY ALONG THE ARC OF SAID CURVE, AN ARC DISTANCE OF 111.86 FEET; THENCE SOUTH 75° 53'12" EAST, A DISTANCE OF 95.08 FEET TO A POINT OF CURVATURE OF A CIRCULAR CURVE CONCAVE TO THE NORTH, HAVING A RADIUS OF 140.00 FEET AND A CENTRAL ANGLE OF 08°36'18"; THENCE EASTERLY ALONG THE ARC OF SAID CURVE, AN ARC DISTANCE OF 21.03 FEET; THENCE SOUTH 84°29'30" EAST, A DISTANCE OF 191.24 FEET TO A POINT OF CURVATURE OF A CIRCULAR CURVE, HAVING A RADIUS OF 90.00 FEET AND A CENTRAL ANGLE OF 61°38'07"; THENCE EASTERLY AND SOUTHEASTERLY ALONG THE ARC OF SAID CURVE, AN ARC DISTANCE OF 96.82 FEET; THENCE SOUTH 22°51'23" EAST, A DISTANCE OF 25.85 FEET; THENCE NORTH 67°08'37" EAST, A DISTANCE OF 181.53 FEET (THE LAST FIFTEEN DESCRIBED COURSES BEING COINCIDENT WITH THE SOUTHERLY BOUNDARY OF THE PLAT OF LAKE CHARLESTON - TRACTS "T" & "V" PLAT ONE AS RECORDED IN PLAT BOOK 71, PAGES 71 THROUGH 74 INCLUSIVE PUBLIC RECORDS OF PALM BEACH COUNTY, FLORIDA); THENCE SOUTH 28°09'52" EAST, A DISTANCE OF 68.30 FEET; THENCE SOUTH 05°43'17" EAST, A DISTANCE OF 133.85 FEET TO A POINT OF CURVATURE OF A CIRCULAR CURVE CONCAVE TO THE NORTHWEST, HAVING A RADIUS OF 100.00 FEET AND A CENTRAL ANGLE OF 60°33'05"; THENCE SOUTHERLY ALONG THE ARC OF SAID CURVE, AN ARC DISTANCE OF 105.68 FEET; THENCE SOUTH 54°49'47" WEST, A DISTANCE OF 146.30 FEET TO A POINT OF CURVATURE OF A CIRCULAR CURVE CONCAVE TO THE NORTH, HAVING A RADIUS OF 175.00 FEET AND A CENTRAL ANGLE OF 62°08'13"; THENCE WESTERLY ALONG THE ARC OF SAID CURVE, AN ARC DISTANCE OF 189.79 FEET; THENCE NORTH 63°02'00" WEST, A DISTANCE OF 50.64 FEET TO A POINT OF A CURVATURE OF A CIRCULAR CURVE CONCAVE TO THE SOUTH, HAVING A RADIUS OF 65.00 FEET AND A CENTRAL ANGLE OF 116°20'06"; THENCE WESTERLY AND SOUTHWESTERLY ALONG THE ARC OF SAID CURVE, AN ARC DISTANCE OF 131.98 FEET; THENCE SOUTH 00°37'54" WEST, A DISTANCE OF 263.20 FEET TO A POINT OF CURVATURE OF A CIRCULAR CURVE CONCAVE TO THE NORTHEAST, HAVING A RADIUS OF 25.00 FEET AND A CENTRAL ANGLE OF 113°58'35"; THENCE SOUTHWESTERLY, SOUTHERLY AND EASTERLY ALONG THE ARC OF SAID CURVE, AN ARC DISTANCE OF 49.73 FEET; THENCE NORTH 68°39'19" EAST, A DISTANCE OF 121.33 FEET TO A POINT OF CURVATURE OF A CIRCULAR CURVE CONCAVE TO THE SOUTHWEST, HAVING A RADIUS OF 125.00 FEET AND A CENTRAL ANGLE OF 160°06'45"; THENCE NORTHEASTERLY, SOUTHERLY AND SOUTHWESTERLY ALONG THE ARC OF SAID CURVE, AN ARC DISTANCE OF 349.31 FEET; THENCE SOUTH 46°46'04" WEST, A DISTANCE OF 202.95 FEET TO A POINT OF CURVATURE OF A CIRCULAR CURVE CONCAVE TO THE SOUTHEAST, HAVING A RADIUS OF 200.00 FEET AND A CENTRAL ANGLE OF 40°31'20"; THENCE SOUTHWESTERLY ALONG THE ARC OF SAID CURVE, AN ARC DISTANCE OF 141.45 FEET; THENCE SOUTH 06°14'44" WEST, A DISTANCE OF 89.43 FEET; THENCE SOUTH 35°01'25" WEST, A DISTANCE OF 32.00 FEET TO THE POINT OF BEGINNING (THE LAST FIFTEEN DESCRIBED COURSES BEING COINCIDENT WITH NORTHERLY, EASTERLY AND SOUTHERLY BOUNDARIES OF SAID PARCEL OF LAKE CHARLESTON PLAT "T" AND "V").

SUBDIVISION # TRACT T & V
BOOK 71 PAGE 187
FLOOD ZONE B
ZONING RTS
QUID # 49
BE 86-96
PUB NAME LAKE CHARLESTON
TAZ 439

BIRCH STREET BUILDERS, INC.

NOTARY

CONTINENTAL BANK

OFFICIAL SEAL
RTA MULARSKI
NOTARY PUBLIC - STATE OF ILLINOIS
MY COMMISSION EXPIRES 5-21-94

Pet. 86-96A
ALLOT. #0012
W/ASSGMT. LETTER

COUNTY COMMISSION

0533-018

LAKE CHARLESTON - TRACTS T & V - PLAT TWO 7/187